

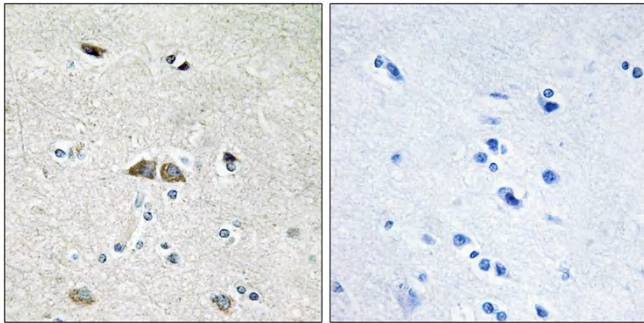


# Ribosomal Protein L39L Polyclonal Antibody

<b>Catalog No</b>	YP-Ab-04147
<b>Isotype</b>	IgG
<b>Reactivity</b>	Human;Rat;Mouse;
<b>Applications</b>	IHC;IF;ELISA
<b>Gene Name</b>	RPL39L
<b>Protein Name</b>	60S ribosomal protein L39-like
<b>Immunogen</b>	The antiserum was produced against synthesized peptide derived from human RPL39L. AA range:1-50
<b>Specificity</b>	Ribosomal Protein L39L Polyclonal Antibody detects endogenous levels of Ribosomal Protein L39L protein.
<b>Formulation</b>	Liquid in PBS containing 50% glycerol, 0.5% BSA and 0.02% sodium azide.
<b>Source</b>	Polyclonal, Rabbit,IgG
<b>Purification</b>	The antibody was affinity-purified from rabbit antiserum by affinity-chromatography using epitope-specific immunogen.
<b>Dilution</b>	IHC: 1/100 - 1/300. ELISA: 1/40000.. IF 1:50-200
<b>Concentration</b>	1 mg/ml
<b>Purity</b>	≥90%
<b>Storage Stability</b>	-20°C/1 year
<b>Synonyms</b>	RPL39L; RPL39L1; 60S ribosomal protein L39-like; 60S ribosomal protein L39-2
<b>Observed Band</b>	
<b>Cell Pathway</b>	cytosolic large ribosomal subunit,
<b>Tissue Specificity</b>	Testis specific.
<b>Function</b>	similarity:Belongs to the ribosomal protein L39e family.,tissue specificity:Testis specific.,
<b>Background</b>	This gene encodes a protein sharing high sequence similarity with ribosomal protein L39. Although the name of this gene has been referred to as 'ribosomal protein L39' in the public databases, its official name is 'ribosomal protein L39-like'. It is not currently known whether the encoded protein is a functional ribosomal protein or whether it has evolved a function that is independent of the ribosome. [provided by RefSeq, Jul 2008],
<b>matters needing attention</b>	Avoid repeated freezing and thawing!
<b>Usage suggestions</b>	This product can be used in immunological reaction related experiments. For more information, please consult technical personnel.



## Products Images



Immunohistochemistry analysis of paraffin-embedded human brain, using RPL39L Antibody. The picture on the right is blocked with the synthesized peptide.